



MX20

With MX20 on hand, label printing becomes so simple between your fingertips.

MX20 is powered by high capacity lithium-ion battery, armored with water/dust/shock resistant feature, supported with drop-and-fit design; it is your ultimate weapon to take on the challenges from mobile applications in retail / warehouse & storage / parking receipt industry and many more.



- Drop & Fit label installation design.
- Long standby time up to 72 hours or 300 label cycles between charges.
- IP54 water / dust resistant and 1.5M shock resistant.
- Supports both wire (RS232 and USB ports)

Specification

MX20

Mobile Printer

| Model | MX20 |
|----------------------------------|---|
| Print Method | Direct Thermal |
| Resolution | 203 dpi (8 dots/mm) |
| Print Speed | Up to 4 IPS (101.6 mm/s) |
| Print Width | 1.89" (48 mm) |
| Print Length | 45" (~1142 mm) |
| Processor | 32 Bit RISC CPU |
| Memory Flash | 128 MB Flash (60 MB for user storage) |
| SDRAM | 32 MB |
| Sensor Type | Gap sensor , Fixed transmissive sensor , Fixed reflective sensor |
| Media Types | Direct Thermal receipt, anti-UV receipt, gap label, center alignment Inter-label gap size from 2 mm to 4 mm. 3 mm preferred |
| Width | 2.28" (58 mm) fixed |
| Thickness | Min 0.0508 mm, Max 0.165 mm |
| Media roll Diameter | Max. 1.57" (40 mm) |
| Printer Language | GPOS Emulations or EZPL / GZPL / GEPL Emulations |
| Software | GoLabel (for EZPL only) |
| Label Design Software | |
| Driver | MAC, Linux, Windows 2000 / XP / VISTA / Windows 7 / Windows 8.1 |
| DLL | Win CE, .NET, Android, Windows Mobile, Windows 2000 / XP / VISTA / Windows 7 / Windows 8.1 |
| Resident Fonts | |
| Bitmap Fonts | 6, 8, 10, 12, 14, 18, 24, 30, 16x26 and OCR A & B. 0°, 90°, 180°, 270° rotatable |
| TTF Fonts | CG Triumvirate™ (Bold / Italic / Underline). 0°, 90°, 180°, 270° rotatable |
| Download Fonts | |
| Bitmap Fonts | 90°, 180°, 270° rotatable, single characters 90°, 180°, 270° rotatable |
| Asian Fonts | 16x16, 24x24, Traditional Chinese (BIG-5), Simplified Chinese (GB2312), Japanese (S - JIS), Korean (KS - X1001) |
| | 90°, 180°, 270° rotatable and 8 times expandable in horizontal and vertical directions |
| TTF Fonts | 90°, 180°, 270° rotatable |
| Barcodes | |
| 1-D Bar codes | Code 39, Code 93, EAN 8 / 13 (add on 2 & 5), UPC A / E (add on 2 & 5), 1 2 of 5 & 1 2 of 5 with Shipping Bearer Bars, Codabar, Code 128 (subset A, B, C), EAN 128, RPS 128, UCC 128, UCC / EAN-128 K - Mart, Random Weight, Post NET, ITF 14, China Postal Code, HIBC, MSI, Plessey, Telepen, FIM, GS1 DataBar, German Post Code, Planet 11 & 13 digit, Japanese Postnet, 12 of 5 with human readable check digit, Standard 2 of 5, Industrial 2 of 5, Logmars, Code 11, Code 49, Cadablock |
| 2-D Bar codes | PDF417, Datamatrix code, MaxiCode, QR code, Micro PDF417, Micro QR code and Aztec code. |
| Code Pages | CODEPAGE 437, 850, 851, 852, 855, 857, 860, 861, 862, 863, 865, 866, 869, 737 WINDOWS 1250, 1251, 1252, 1253, 1254, 1255, 1257 Unicode UTF8 · UTF16BE · UTF16LE |
| Graphics | Resident graphic file types are BMP and PCX, other graphic formats are downloadable from the software |
| Interfaces | RS232 + USB 2.0 port, mini-B type connector Bluetooth 2.1 + EDR |
| Control Panel | 4 dual color LEDs for Power, Battery, Communication, Error status indication. 3 buttons for Power, Feed and BT functions |
| Power Adapter | Switching power supply I/P: 100 / 240 V AC, 50 / 60 Hz, DC 9 V / 2.2 A |
| Battery | Rechargeable DC 7.4 V Lithium-ion battery, 1150 mAH or higher capacitance |
| Environment | |
| Operation Temperature | 32 °F to 122 °F (0°C to 50°C) |
| Storage Temperature | -4 °F to 140 °F (-20°C to 60°C) |
| Humidity | |
| Operation | 10 – 90 %, non - condensing. |
| Storage | 10 – 90 %, non - condensing. |
| IP Rating | Intrusion Protection, IP42 requirement for case design, IP54 for protective case |
| Drop Level | 1.5 meter height |
| Agency Approvals | CE EMC, FCC part 15B class B, FCC Part 15C, SRRC, NCC, CB, UL, cUL |
| Dimension | |
| Height | 2.0" (51 mm) |
| Width | 3.3" (84 mm) |
| Length | 5.1" (129.55 mm) |
| Weight | 0.72 lbs (325 g), with battery |
| Options & Accessories | Switching power supply USB cable RS-232 cable Li-ion battery 4-bay battery charger station Car charger adapter Protective case |

**Specifications are subject to change without notice. All company and/or product names are trademarks and/or registered trademarks of their respective owners.

Minimum print height and maximum print speed specification compliance can be dependent on non-standard material variables such as label type, thickness, spacing, liner construction, etc. Godex is pleased to test non-standard materials for minimum print height and maximum print speed capability.

Applications

Applications for Labels & Barcodes

MX20 support label & barcode printings Anywhere and Anytime.



Warehouses, Logistic & Transportation

Cross Docking, inventory management, receiving / shipping, work - in - process tracking, or related industrial applications.

Retail

Content labels, receipts for registered mails, invoices & receipts, postage labels, etc.

Parking Management

Parking receipt, parking ticket, and so on.

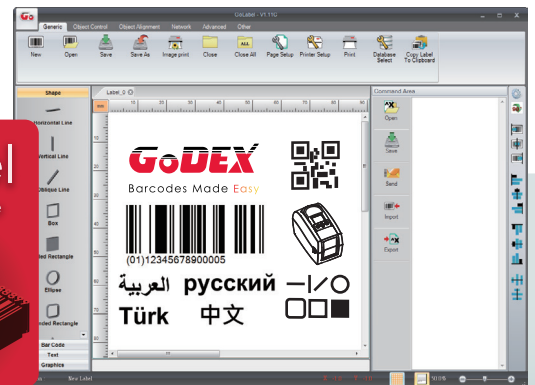
GoDEX

LABEL DESIGN SOFTWARE

GoLabel Software / User
Friendly

GoLabel is based on a WYSIWYG (what you see is what you get) user interface, makes everything so easy for you to create and print barcode labels. GoLabel is the first - choice label design software that you can't miss it!

Go visit www.godexintl.com and download GoLabel to experience it!



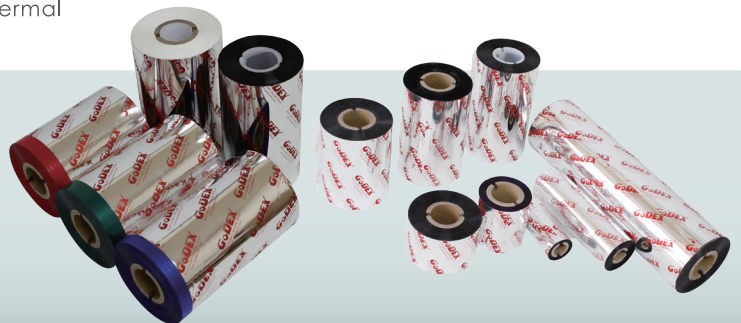
GoDEX

RIBBONS

High quality original GoDEX thermal
transfer ribbons

GoDEX offers premium thermal transfer ribbons that will fit most of your printing applications.

- Wax
- Wax / Resin
- Resin
- Near Edge



Martek Industries Ltd
12B Ridings Park Industrial Estate
Cannock - WS11 7FJ

Tel: 01543 502202
godex.co.uk
sales@godex.co.uk