



Series 100 Cash Drawer



Compact, Efficiently Designed Cash Drawer

Performance Solution

Designed around a full size till, the narrow footprint of the Series 100 minimizes the amount of counter space required. Ample storage in a deep under-till compartment holds coin rolls and packaged currency. An adjustable media slot divider separates and organizes different media types. With features including steel ball bearing slides and a robust latch mechanism, the Series 100 is proven beyond four million transactions. A durable design and the resilient powder coat finish resist the abuse in even the toughest environments.

Size, color, interface, accessory and configuration options complete the Series 100 solution and contribute to APG's reputation as the preferred choice amongst cash drawers.



Industrial-Grade Steel Ball Bearing Slides

Ensures effortless performance and durability.



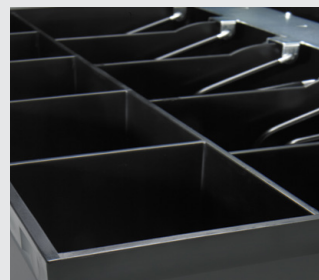
Heavy Duty Latch Mechanism

A perfect balance between ease of operation and robust construction.



MultiPRO® Interface

The MultiPRO® Interface adapts to most POS platforms.



Heavy Duty Till

Equipped with strong dividers and comfort coated hold downs.

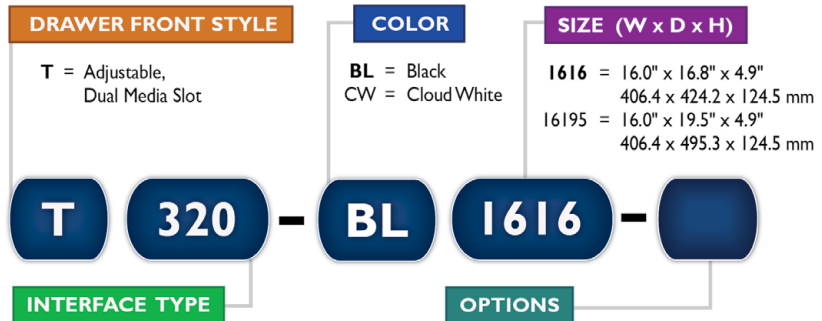


Product Features

Size	See chart below for options	Till	Till configurations to fit virtually any currency worldwide <i>(See chart below for options)</i>
Color	Black (BL) Cloud White (CW)	Lock	Four Function Lock
Media	Adjustable single media slots	Key	Random keying from 10 lock codes is standard <i>(Other lock and key options are available)</i>
Life Cycle	Tested beyond 4 million transactions	Interfaces	Multiple options available <i>(See chart below for options)</i> Closed and latched drawer status switch
Warranty	5 Years <i>(Visit www.cashdrawer.com/warranty for warranty statement)</i>		

Series 100 Part Number Structure

Numerous configurations are available. Contact your APG representative for options.



- 237A = Hardwired for Printer
(See Connectivity Guide)
- 320 = MultiPRO® 24V*
- 320-I = MultiPRO® 24V w/ CD-101A Cable
- 420 = MultiPRO® II 12V*
- 520 = MultiPRO® III Dual 12V/24V*
- 484A = SerialPRO® II
- 554A = USBPro™ HID End Node
- 480 = NetPRO® Ethernet Interface**

- Blank = Fixed 5x5 Till (Standard)
- C = Coin Roll Storage Till
- M1 = Euro Note Lay Flat Format 8 Coin, 5 Note
- M3 = Canadian Dollar Lay Flat Format 8 Coin, 5 Note
- M4 = Euro/Sterling/Chinese Renminbi Inclined Format 8 Coin, 7 Note
- M5 = Sterling Bill Lay Flat Format 8 Coin, 4 Note
- M6 = Euro/Sterling/China Inclined Format 8 Coin, 8 Note
- Kxx = Keyed Alike (xx = key #)
- E2 = European Power Supply

* Requires detachable cable sold separately.
** Numerous Ethernet Interface options, see NetPRO® brochure.
Refer to Connectivity Guide for interface cable detail.
Customization Available.

Additional Series 100 Brochures: Product Specifications, Performance All-In-One Guide, Performance Accessories Guide

Contact Us



APG Cash Drawer, LLC
5250 Industrial Blvd NE
Minneapolis, MN 55421



+1 (763) 571-5000



sales@us.cashdrawer.com