

DIBAL

500 RANGE SCALES



WIND SERIES

WIND SERIES scales belong to **500 RANGE**, the new family of DIBAL scales, outstanding for design, technology and performance.



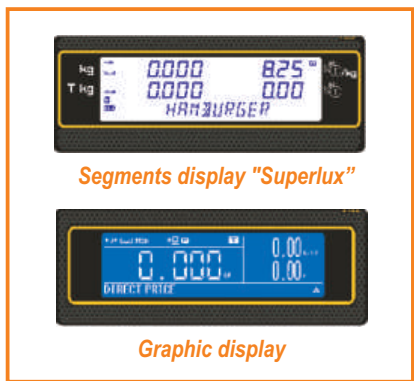
WIND MISTRAL TORNADO STAR

Capacities

- Mono-range (3.000 divisions):**
15 kg - 5g
30 kg - 10g
- Multi-range (3.000 divisions):**
6 kg - 2g # 15 kg - 5g
15 kg - 5g # 30 kg - 10g
- Mono-range (6.000 divisions):**
12 kg - 2g
30 kg - 5g

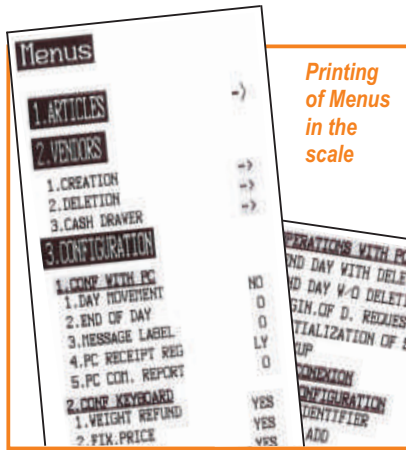
Display

- Segments display or graphic display.**
- Both of them can show weight, price, total and tare, active vendors and name of the product.
- Additionally, **graphic display** can show logos, publicity, profitability codes (in vendor side) and allow to choose between **4 "screen designs"**.

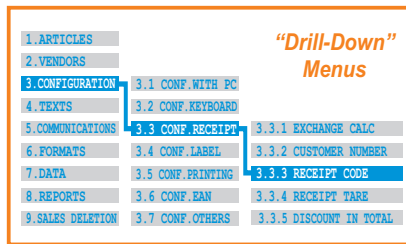


Segments display "Superlux"

Graphic display



Printing of Menus in the scale



"Drill-Down" Menus

Amazing functionality

- Depending on model, **WIND SERIES** scales are supplied with **up to 5.000 PLUS**, **up to 45 preset keys** and **up to 10 vendors** (see table of models).
- Complete information for each PLU:**
 - Regular price.
 - Price by weight segments and per kg/100 g (W-020 and W-025).
 - 2 names of 20 characters (1 name in W-010 and W-015).
 - 10 free texts of 24 characters (5 texts in W-010 and W-015).
 - 1 text of 1.024 characters (W-025).
 - Profitability code.
- Sales and management reports:** sales (by article, vendor, time slots, last month,...), margins, cash drawer report, last modified PLUs,...
- Fast and reliable communications** among scales, PC and mobile devices including new **DWS (Dibal Web Server)**.

Easy programming and operation

- WIND SERIES** scales have been designed thinking on the needs of **users** and **service departments**:
 - **"Drill-Down" Menus.**
 - **Menus can be printed** in the scale.
 - **Special keys for direct access to programming menus:** change a price, include a new PLU or vendor, sales reports,...
 - **Direct access to 999 PLUs from keyboard.**
 - **Search of PLUs by number** (W-020 and W-025).
 - **Search of PLUs by name** (W-020 and W-025): typing the initial characters of the name, the display shows the matching items.
 - **2 programmable "Macros"** (W-020 and W-025): recording of a sequence of keys, to create a "shortcut" to any task: change of batch number, access to programming parameters, receipt reopening, reports, etc.
 - **Security:** configurable password system.



Direct access to 999 PLUs



Direct keys to programming menus

Stocks management in the scale

- Entry** of initial stock.
- Register of sales**, deducted from stock.
- Display and print **reports of stock by PLU.**
- Adjustment of stock** after physical inventory.
- Information can be sent to PC.**

Table of Models

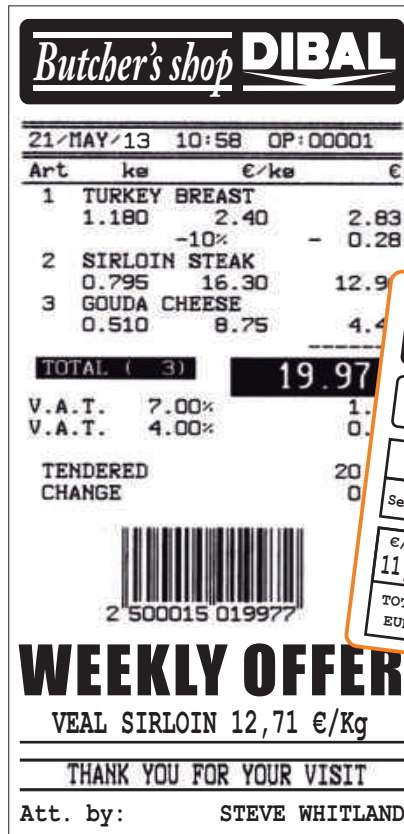
MODEL	FORMAT		DISPLAY		TOTAL PLUs	PLUs			PRINTER	SPEED maximum (mm/second)	INTER-CONNECTION (ETHERNET) Nº SCALES	COMMUNICATIONS					BATTERY	
	FLAT (F)	POLE (P)	SEGMENTS LCD	GRAPHIC L LCD		DIRECT PLUs	MACROS	VENDORS				PAPER TYPE	ETHERNET TCP/IP	WI-FI IEEE 802.11	HOMEPLUG	SCANNER	CASH DRAWER	HIGH CAPACITY + EXTERNAL BAT. CONN.
W-010	•	•	•		2.000	45x2 + 4x2*	-	5	Receipt	80	5	•	OPT.	OPT.	•		OPT.	
W-010 B	•	•	•		2.000	45x2 + 4x2*	-	5	Receipt	60	5	•	OPT.		•	•		
W-015	•	•	•		2.000	45x2 + 4x2*	-	5	Label or Receipt	80	5	•	OPT.	OPT.	•		OPT.	
W-020	•	•	•	OPT.	5.000	40x2 + 9x2*	2	10	Receipt	100	10	•	OPT.	OPT.	•	•	OPT.	
W-020 B	•	•	•	OPT.	5.000	40x2 + 9x2*	2	10	Receipt	60	10	•	OPT.		•	•		
W-025	•	•	•	OPT.	5.000	40x2 + 9x2*	2	10	Label or Receipt	100	10	•	OPT.	OPT.	•	•	OPT.	

OPT. = Optional.

* Using Shift and Vendor keys.

Printing

- High resolution (2", 54 mm) and fast printer: up to 100 mm/second (80 mm/s in W-010/W-015 and 60 mm/s in "B" models with internal battery).
- Receipts:
 - Up to 40 lines.
 - 2 fixed formats + 1 programmable (W-020/W-025). (only 2 fixed formats in W-010 and W-015 models)
 - 4 logos per receipt (W-020 and W-025).
 - Vendor's name (W-020 and W-025).
 - 9 payment modes.
 - Total in €, old national currency and 2 additional currencies.
 - Discounts on line and total.
 - Clients on account (W-020 and W-025).
- Labels:
 - 20 fixed formats + 10 programmable (W-025). (20 fixed + 5 programmable in W-015)
 - From 30x30 up to 60x100 mm (W-025). (up to 60x80 mm in W-015)
 - 40 logos.
 - 40 fields of information.
 - 100 programmable texts.
 - Manual and automatic pre-packing modes.
 - 3 levels of totals (W-025).
 - Printing of a preset number of copies (W-025).
 - Printing with 90°-180°-270° rotation (W-025).
 - "Opto" automatic adjustment for paper detection.
 - Global expiration date (W-025).
 - Alphanumerical batch (W-025).



Easy maintenance

- Local/remote, with/without assistance.
- Internal firmware updateable from PC.
- On line checking and modification of technical parameters, by means of optional DWS (Dibal Web Server).

Barcodes

- WIND SERIES scales can print in both receipts and labels EAN-13 and GS1 DataBar barcodes.
- Moreover, W-020 and W-025 models also allow the connection of a scanner, powered by the scale (5 VDC), to read these barcodes.



Generic traceability (labels)

- Including EU Bovine Meat Regulations.
- 2 types of generic traceability (for meat, fish, fruits, vegetables,...) and up to 20 products in W-025 (1 type and up to 10 products in W-015).

Fiscal mode (dep. on countries)

- With this option activated, the scale will keep a full copy of all receipts printed, allows printing a list of them and keeps consecutive numbers of receipts throughout the fiscal period.

Power supply - Rech. Batteries

- Mains: 110 or 230 VDC.
- "Anti black-out" battery, optional depending on models.
- "B" models, with long lasting internal rechargeable battery: up to 36 hours. (calculated for 1.000 receipts, 3 articles per receipt).*
- Optional external battery connector.

* With segments display and backlight off. Load and range of rechargeable batteries can vary substantially depending on temperature, age and general state of batteries, printing frequency, networking, etc.

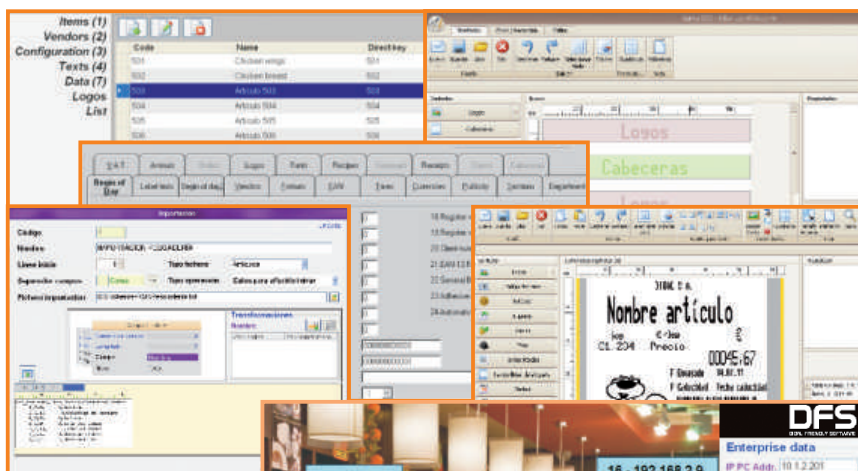
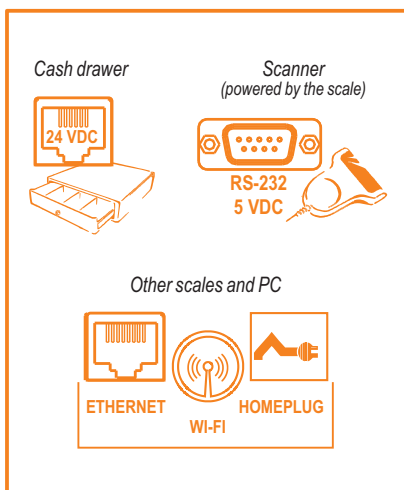
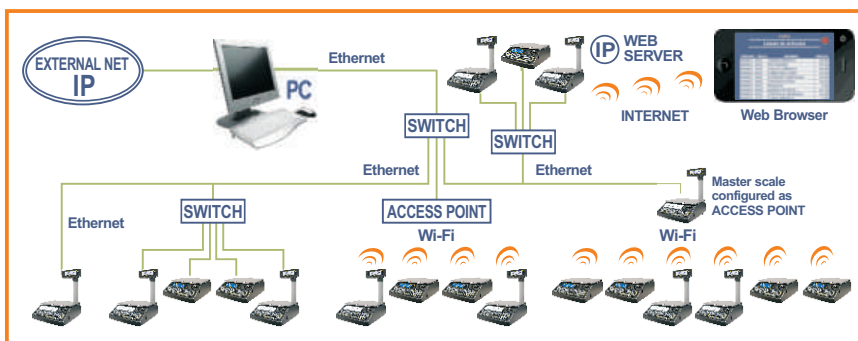
Formats and Dimensions



Dimensions in mm.

Communications

- **Interconnection and computer connection** of scales based on **ETHERNET TCP/IP**, as standard, and **Wi-Fi (802.11)** or **Homeplug**, as an option.
- **Interconnection** of up to **10 scales** per section (5 in W-010 and W-015 models), on "master + slaves" or "master + submaster + slaves" configuration.



PC Software

- Several **applications** are available, running on **Windows**, to connect **WIND SERIES** scales to PC:

RMS: Retail Management Software
DLD: Dibal Label Designer

- **RMS+DLD:** programming the scales, design labels/receipts (DLD) and **commercial management** of data received from scales (lists, invoices, warehouses, customers, offers, etc).

DFS: Dibal Friendly Software
DLD: Dibal Label Designer

- **DFS+DLD:** programming the scales, design labels/receipts (DLD) and reception of data with fully configurable lists. It stands out for its **ease of use, speed of communication and simultaneous connection with all scales.**

- Moreover, Dibal supplies **integration tools** running on Windows or Linux, to facilitate the integration with **customer's "Back-Office"**.

RMS
DLD
DFS



Web Server

- **WIND SERIES** scales can incorporate **DIBAL WEB SERVER (DWS) embedded**, allowing access to each scale -through the IP address- from any computer or mobile device (smartphone, tablet,...) with web browser. Access is protected by several levels of passwords.
- Thanks to **DWS**, many **parameters** of the scale can be remotely **checked and/or modified**:
 - **Technical Service:** consult and modification of technical parameters.
 - **Sales Information:** consult of total and detailed sales.
 - **Information and Management:** "on-line" lists and modifications.

