



iMin Swan 1

Desktop POS



Single Display



Dual Display



Detachable Secondary Display



Rotatable Secondary Display



Detachable Secondary Display for Signature

* Swan 1 Secondary Display comes with the option to support NFC and touchscreen.

Two Secondary Screen Options



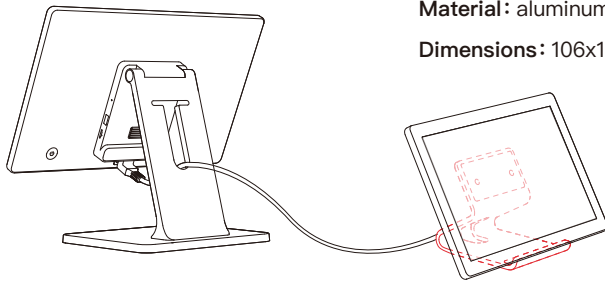
Normal Secondary Display



NFC on the Secondary Display

Three Optional Accessories

A1 – Detachable Stand

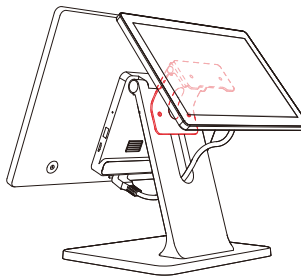


Display Cable: 100cm in length

Material: aluminum alloy

Dimensions: 106x111x96mm

A2 – Rotatable Stand



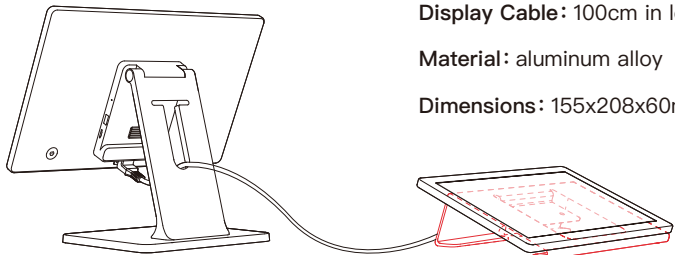
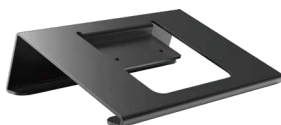
Display Cable: 30cm in length

Rotation angle: 0°~ 60°

Material: SPCC

Dimensions: 98x55.5x79mm

A3 – Signature Stand



Display Cable: 100cm in length

Material: aluminum alloy

Dimensions: 155x208x60mm

* The product pictures and display contents in the above pages are for illustration purposes only. The actual product effects (including but not limited to appearance, color, size) and screen display contents (including but not limited to background UI pictures) might differ.

The performance results are obtained from iMin's internal laboratory and extracted from specific test environments. In actual use, there might be a difference in performance due to individual differences in product, software, use conditions and environmental factors.

The secondary display and accessories (display cable extension) are sold separately according to user needs.